



LIGHTSPACE
CORPORATION



UNIQUE INTERACTIVE INSTALLATIONS

LIGHTSPACEDESIGN

PRODUCT BROCHURE



CREATE DESIGN

a mood altering, color changing,
highly dynamic interactive
lighting and display system



LIGHTSPACE CORPORATION

Lightspace® provides cutting edge interactive lighting and entertainment products to numerous industries including Architectural Lighting & Design, Retail, Nightclubs, Theme Parks, Fashion Shows, Special Events, Stage Lighting & Sound, Health Clubs, and Family Entertainment Centers.

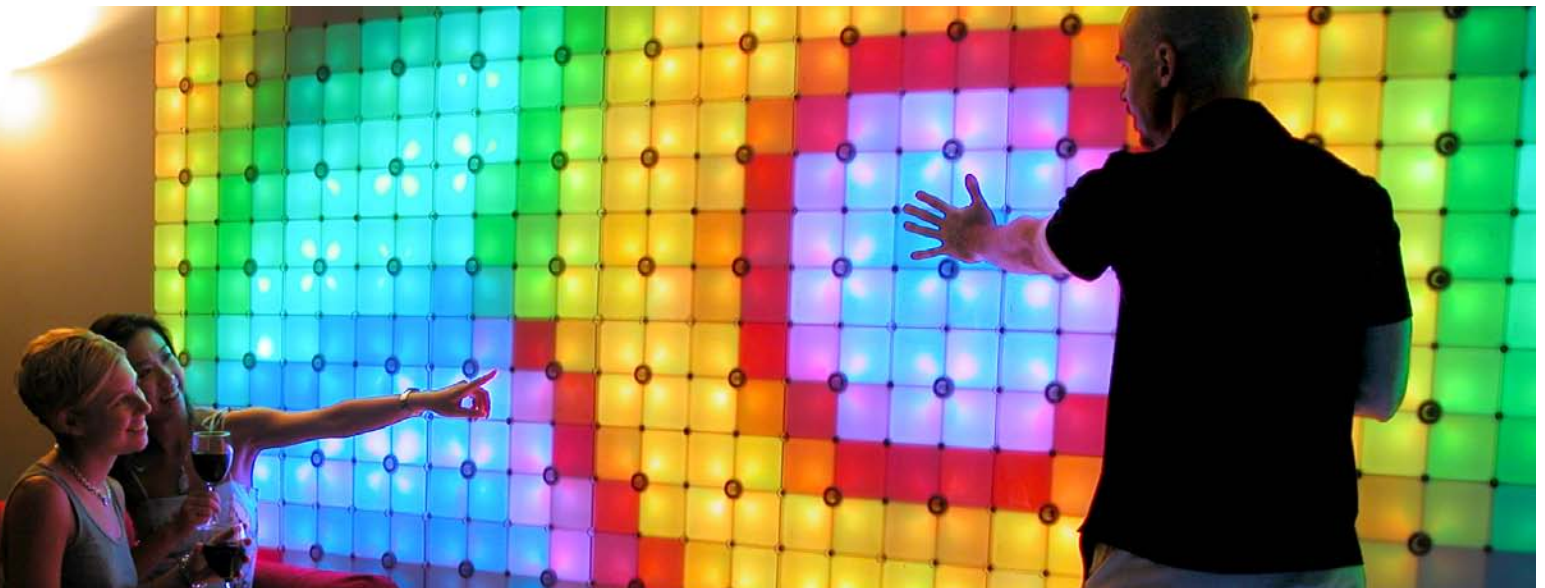
The Lightspace® patent pending technology creatively engages and interacts with people to immerse them in a new experience of interactive visual and audio effects enhancing their overall enjoyment as they dance, play, workout and generally have fun.

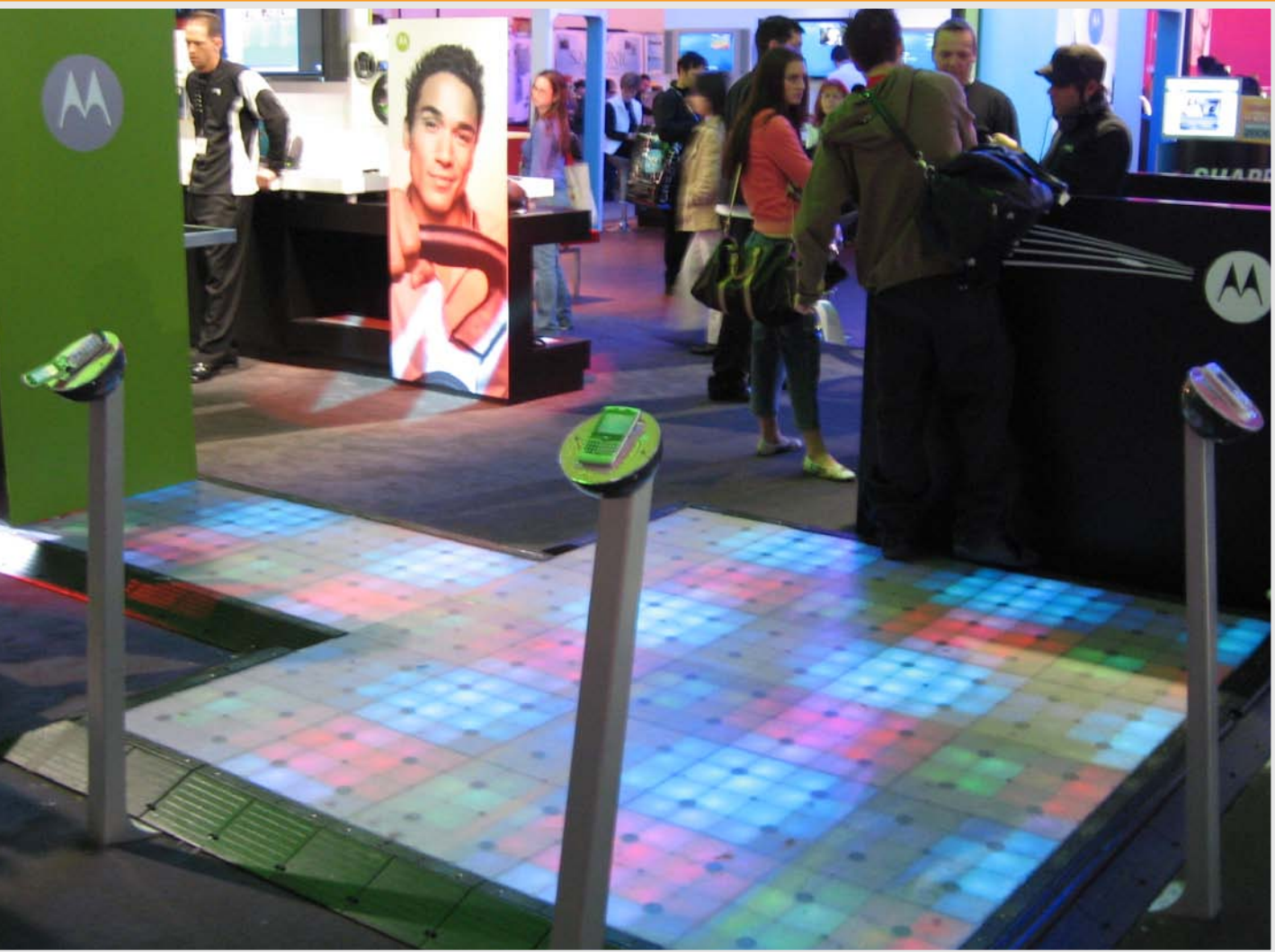
WHAT IS LIGHTSPACE DESIGN?

*UNIQUE AND
FUNCTIONAL
DESIGN
ELEMENT*

Lightspace® Design is an ambient, color changing, or dynamic lighting and display system that transforms everyday spaces into unique and highly personalized works of art. By combining our cutting edge and energy-efficient, L.E.D. pressure sensitive tiles with the control of the Lightspace® Management System, architects and lighting designers can invent highly customizable interactive structures and lighting and/or visual effects. Lightspace® Design offers a complete diverse range of applications, high-end design and modern, cutting edge technology that ensure your custom designs never go out of style and remain a true one-of-a-kind creation.

Whether you are designing the most sophisticated display area at an exceptional hotel, an outstanding wall display at the latest retail location, the most stimulating rehabilitation hospital activity, an engaging interactive museum exhibit or a must-have play area in your next high-end home project, Lightspace® Design allows you to create unique, functional and highly marketable environments that make a lasting impression.





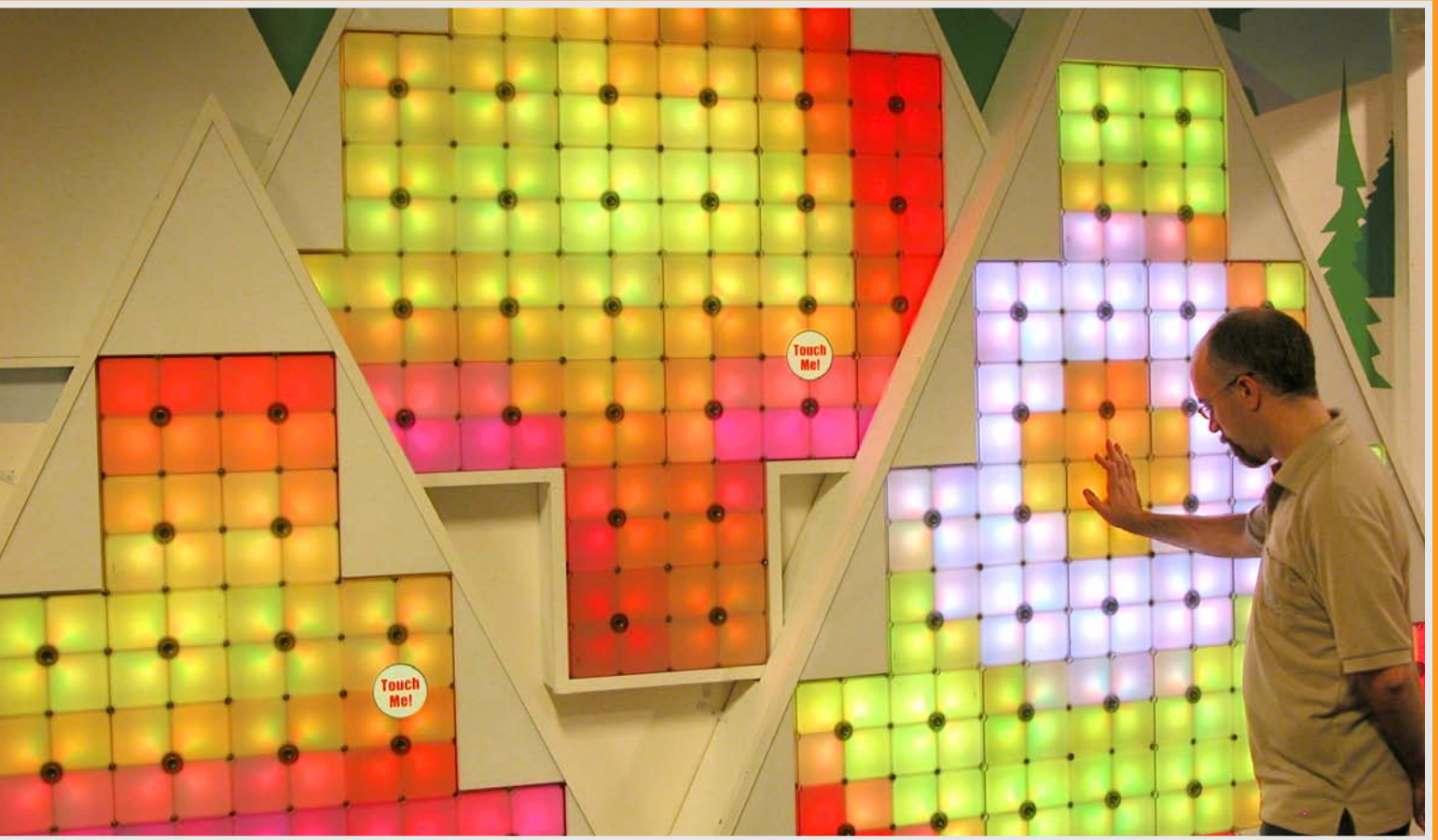
Versatile design elements.

Lightspace® Design supports countless combinations of immersive entertainment and architectural possibilities. With Lightspace®, designers, artists and builders can showcase endless interactive visual displays and effects that can be easily customized to meet the needs of your clientele. Lightspace® Design is so customizable that the same floor or structure can be used to support various events, promotional opportunities, changing audiences and themes or customized to include music visualizations, interactive special effects and/or specialized animated objects based on audience, desired ambience, and/or interactive purpose.

FEATURES

- Fully Customizable
- Custom interactive effects
- Displays major graphic formats
- Displays major video formats
- Play Macromedia® Flash® files
- Media Server input
- Video input for live cameras
- Automated playback
- Ability to layer effects/graphics/video
- Resizable layouts

ADVANTAGES



Easily adaptable and never obsolete.

Lighting designers and architects can rest assured that their distinct, highly customized display or lighting/effect creations will never become stale or outdated, as Lightspace® Design can be easily updated with new interactive effects and software packages. New features and functionality can be added at any time, allowing locations to customize and change their system based on seasonal needs or changes in their interior design.

One technology, numerous possibilities.

Lightspace® Design can be used on a variety of surfaces and structures and is capable of supporting a completely versatile customer experience. Lightspace® Design enables you to design your own unique creation that fuses light, sound and physical movement to create a highly appealing and completely adaptable customer experience.



QUICK FACTS:

Floor Dimensions

9'4" by 9'4" (2.5" thick)
284.5cm by 284.5cm (6.35cm thick)

Tile Dimensions (single)

16" by 16" (2.5" thick)
40.64cm by 40.64cm (6.35cm thick)

Housing

Impact resistant polycarbonate shell

Weight

7.25 lbs/tile (3.29 kg/tile)

Power Distribution

A redundant power matrix to ensure uninterrupted service on demand

Electrical

1.8 Amps @ 8 VDC

Lighting Source

48 LEDs per tile

Weight Capacity

3000 lbs max per tile

Color Range

Millions of discrete colors

Physical Communication

Proprietary network connectors link individual nodes

Interactivity Sensors

Location and movement tracking sensors for interactivity data generation

Ramps

8 inch ramps for surface application

Protective Vinyl Surface

Variety of thickness and texture for non-slip and water resistant surface

Software

Lightsoft Management System



529 Main Street | Suite 330
Boston, MA 02129

t / 1.617.868.1700
f / 1.617.242.1440

SALES

t / 1.617.868.1700
e / sales@lightspace-design.com

Visit us at:
WWW.LIGHTSPACE-DESIGN.COM

